

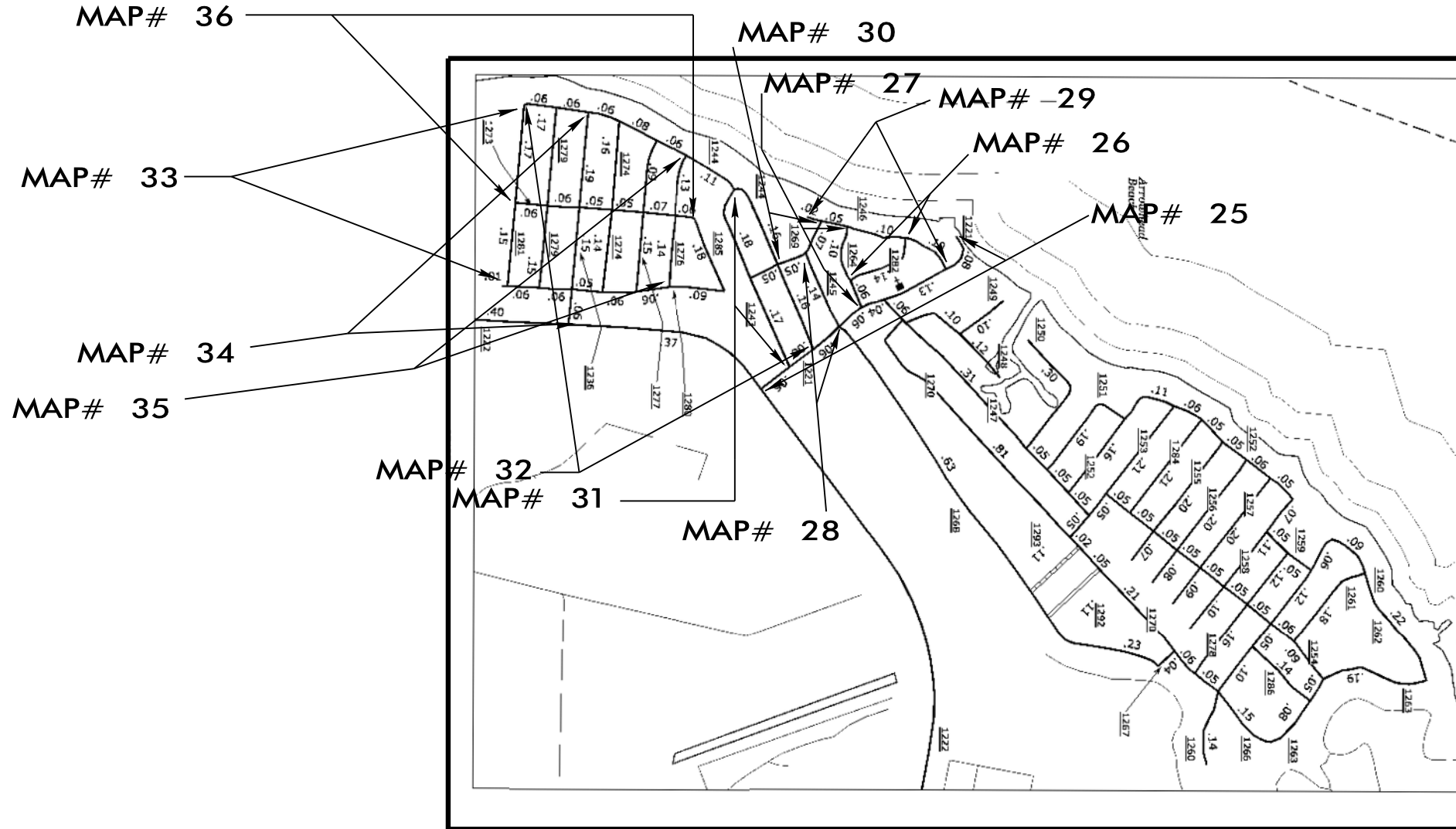
CONTRACT NO.: DA00260 WBS NO.: 2016CPT.01.02.2012.1, ETC.



STATE OF NORTH CAROLINA
 DIVISION OF HIGHWAYS

CHOWAN COUNTY

LOCATION: MAP'S 25 THRU 36 (ARROW BEACH SUB - DIVISION)
 TYPE OF WORK: THIN LIFT RESURFACING



STATE	STATE PROJECT REFERENCE NO.	SHEET NO.	TOTAL SHEETS
N.C.	2016CPT.01.02.2012.1, ETC.	2	4
STATE PROJ. NO.	F.A. PROJ. NO.	DESCRIPTION	

NOT TO SCALE

PROJECT LENGTH
 2016CPT.01.02.2012.2

MAP# 25 (.46 MI.) MAP# 26 (.14 MI.) MAP# 27 (.15 MI.) MAP# 28 (.14 MI.)
 MAP# 29 (.28 MI.) MAP# 30 (.16 MI.) MAP# 31 (.34 MI.) MAP# 32 (.75 MI.)
 MAP# 33 (.33 MI.) MAP# 34 (.38 MI.) MAP# 35 (.27 MI.) MAP# 36 (.33 MI.)

Prepared in the Office of:
DIVISION OF HIGHWAYS

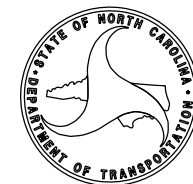
2012 STANDARD SPECIFICATIONS

LETTING DATE:

W.B. HOBBS, P.E.
 DIVISION PROJECT MANAGER

C.E. SLACHTA
 DIVISION PROPOSALS ENGINEER

DIVISION OF HIGHWAYS
 STATE OF NORTH CAROLINA

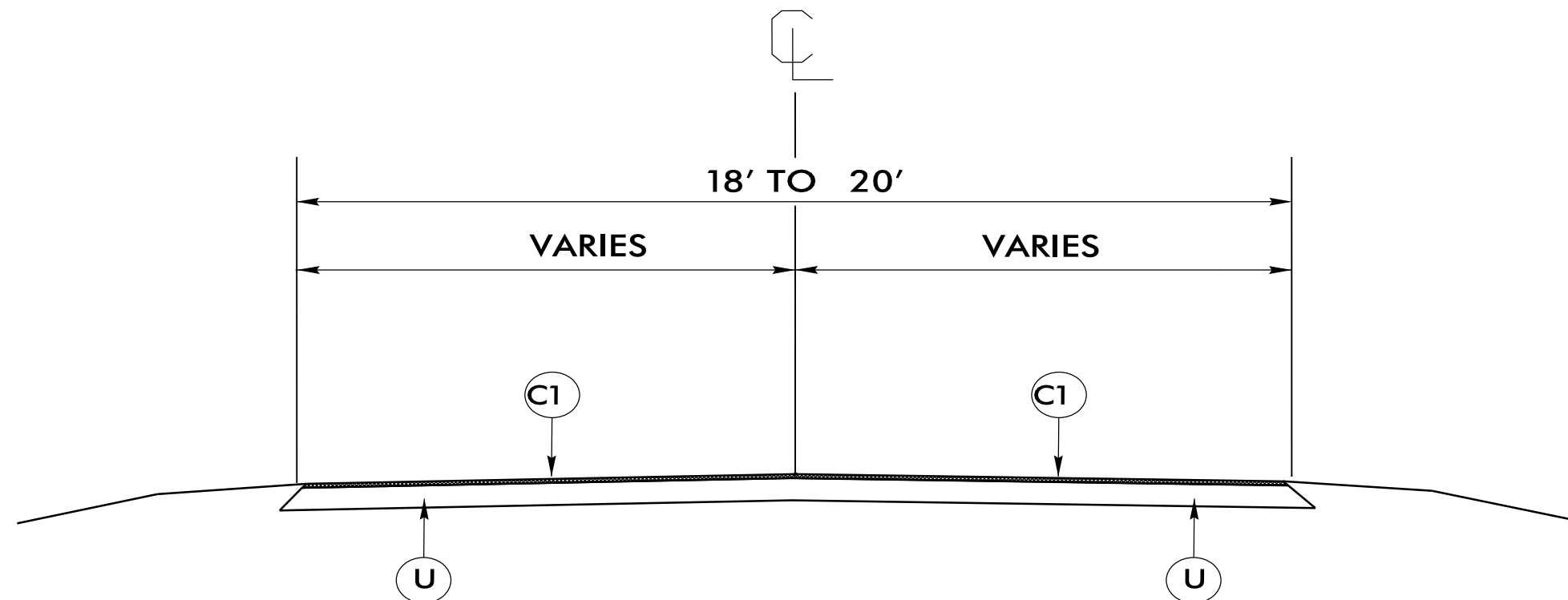


NOTES:

1. ALL PAVED S.R. ROADS TO BE RESURFACED TO THE ENDS OF THE RADII OR AS DIRECTED BY THE ENGINEER
2. EDGES, PAVEMENT WIDENING, INTERSECTIONS, AND BRIDGE FLARES ARE INCLUDED IN THE TABLE OF QUANTITIES
3. PAVEMENT EDGE SLOPES ARE 1:1 UNLESS SHOWN OTHERWISE
4. SHOULDERS AND DITCHES ARE TO BE CONSTRUCTED BY OTHERS

PROJECT REFERENCE NO.	SHEET NO.
2016CPT.01.02.20212.1, ETC.	3 OF 4

PAVEMENT SCHEDULE	
C1	PROP. APPROX. .75" ASPHALT CONCRETE SURFACE COURSE TYPE S4.75 A, AT AN AVERAGE RATE OF 75 LBS. PER SQ.YD.
U	EXISTING PAVEMENT.



TYPICAL SECTION #1

USE WITH MAPS 1 - 36

PROJECT NO.	SHEET NO.	TOTAL NO.
2016CPT.01.02.2021.1, ETC.	4	4

SUMMARY OF QUANTITIES

PROJECT NO	COUNTY	MAP NO	ROUTE	DESCRIPTION	TYP NO	LANES	LANE TYPE	FINAL SURFACE TESTING REQUIRED	WARM MIX ASPHALT REQUIRED	LENGTH MI	WIDTH FT	MOBILIZATION LUMP SUM	SURFACE COURSE, S4.75A TONS	ASPHALT BINDER FOR PLANT MIX TONS	TEMPORARY TRAFFIC CONTROL LUMP SUM
2016CPT.01.02.2021.1	Chowan	1	SR 1260 M	FROM SR 1262 TO SR 1254	1	2		NO	NO	0.18	18	1	83	6	1
2016CPT.01.02.2021.1	Chowan	2	SR 1260	FROM SR 1254 TO END PAV.	1	2		NO	NO	0.29	18	*	133	9	*
2016CPT.01.02.2021.1	Chowan	3	SR 1261	FROM SR 1254 TO SR 1262	1	2		NO	NO	0.18	18	*	83	6	*
2016CPT.01.02.2021.1	Chowan	4	SR 1262	FROM SR 1260 TO SR 1263	1	2		NO	NO	0.31	18	*	142	10	*
2016CPT.01.02.2021.1	Chowan	5	SR 1263	FROM SR 1262 TO SR 1266	1	2		NO	NO	0.32	18	*	147	10	*
2016CPT.01.02.2021.1	Chowan	6	SR 1267	FROM SR 1266 TO SR 1268	1	2		NO	NO	0.04	18	*	18	1	*
2016CPT.01.02.2021.1	Chowan	7	SR 1268	FROM SR 1267 TO SR 1221	1	2		NO	NO	0.86	18	*	395	27	*
2016CPT.01.02.2021.1	Chowan	8	SR 1286	FROM SR 1260 TO SR 1263	1	2		NO	NO	0.14	18	*	64	4	*
2016CPT.01.02.2021.1	Chowan	9	SR 1254 M	FROM SR 1253 TO SR 1263	1	2		NO	NO	0.49	18	*	225	15	*
2016CPT.01.02.2021.1	Chowan	10	SR 1250	FROM SR 1247 TO DEAD END	1	2		NO	NO	0.25	18	*	115	8	*
2016CPT.01.02.2021.1	Chowan	11	SR 1251	FROM SR 1247 TO SR 1252	1	2		NO	NO	0.2	18	*	92	6	*
2016CPT.01.02.2021.1	Chowan	12	SR 1252	FROM SR 1247 TO SR 1258	1	2		NO	NO	0.52	18	*	239	16	*
2016CPT.01.02.2021.1	Chowan	13	SR 1253	FROM SR 1252 TO SR 1270	1	2		NO	NO	0.3	18	*	138	9	*
2016CPT.01.02.2021.1	Chowan	14	SR 1255	FROM SR 1252 TO END MAINT.	1	2		NO	NO	0.27	18	*	124	8	*
2016CPT.01.02.2021.1	Chowan	15	SR 1256	FROM SR 1252 TO DEAD END.	1	2		NO	NO	0.27	18	*	124	8	*
2016CPT.01.02.2021.1	Chowan	16	SR 1257	FROM SR 1252 TO END MAINT.	1	2		NO	NO	0.28	18	*	129	9	*
2016CPT.01.02.2021.1	Chowan	17	SR 1258	FROM SR 1252 TO CUL- DE- SAC	1	2		NO	NO	0.29	18	*	133	9	*
2016CPT.01.02.2021.1	Chowan	18	SR 1259	FROM SR 1258 TO SR 1260	1	2		NO	NO	0.1	18	*	46	3	*
2016CPT.01.02.2021.1	Chowan	19	SR 1278 M	FROM SR 1259 TO SR 1266	1	2		NO	NO	0.27	18	*	124	8	*
2016CPT.01.02.2021.1	Chowan	20	SR 1284	FROM SR 1252 TO SR 1254	1	2		NO	NO	0.21	18	*	96	7	*
2016CPT.01.02.2021.1	Chowan	21	SR 1270	FROM SR 1253 TO SR 1247	1	2		NO	NO	0.8	18	*	367	25	*
2016CPT.01.02.2021.1	Chowan	22	SR 1247	FROM SR 1221 TO SR 1253	1	2		NO	NO	0.53	18	*	243	17	*
2016CPT.01.02.2021.1	Chowan	23	SR 1248	FROM SR 1247 TO DEAD END	1	2		NO	NO	0.22	18	*	101	7	*
2016CPT.01.02.2021.1	Chowan	24	SR 1249	FROM SR 1248 TO DEAD END	1	2		NO	NO	0.1	18	*	46	3	*
2016CPT.01.02.2021.2	Chowan	25	SR 1221	FROM SR 1222 TO DEAD END	1	2		NO	NO	0.46	18	1	211	14	*
2016CPT.01.02.2021.2	Chowan	26	SR 1282 M	FROM SR 1264 TO SR 1246	1	2		NO	NO	0.14	18	*	64	4	*
2016CPT.01.02.2021.2	Chowan	27	SR 1264	FROM SR 1221 TO SR 1246	1	2		NO	NO	0.15	18	*	69	5	*
2016CPT.01.02.2021.2	Chowan	28	SR 1245	FROM SR 1221 TO SR 1269	1	2		NO	NO	0.14	18	*	64	4	*
2016CPT.01.02.2021.2	Chowan	29	SR 1246	FROM SR 1221 TO DEAD END	1	2		NO	NO	0.28	18	*	129	9	*
2016CPT.01.02.2021.2	Chowan	30	SR 1269	FROM SR 1246 TO SR 1244	1	2		NO	NO	0.16	18	*	73	5	*
2016CPT.01.02.2021.2	Chowan	31	SR 1243	FROM SR 1221 TO SR 1244	1	2		NO	NO	0.34	18	*	156	11	*
2016CPT.01.02.2021.2	Chowan	32	SR 1244	FROM SR 1221 TO SR 1281	1	2		NO	NO	0.75	18	*	344	23	*
2016CPT.01.02.2021.2	Chowan	33	SR 1281	FROM SR 1244 TO SR 1280	1	2		NO	NO	0.33	18	*	151	10	*
2016CPT.01.02.2021.2	Chowan	34	SR 1236	FROM SR 1222 TO SR 1244	1	2		NO	NO	0.38	20	*	194	13	*
2016CPT.01.02.2021.2	Chowan	35	SR 1276	FROM SR 1244 TO SR 1280	1	2		NO	NO	0.27	18	*	124	8	*
2016CPT.01.02.2021.2	Chowan	36	SR 1273	FROM SR 1281 TO SR 1285	1	2		NO	NO	0.33	18	*	151	10	*
GRAND TOTAL										11.15		1	5,137	347	1